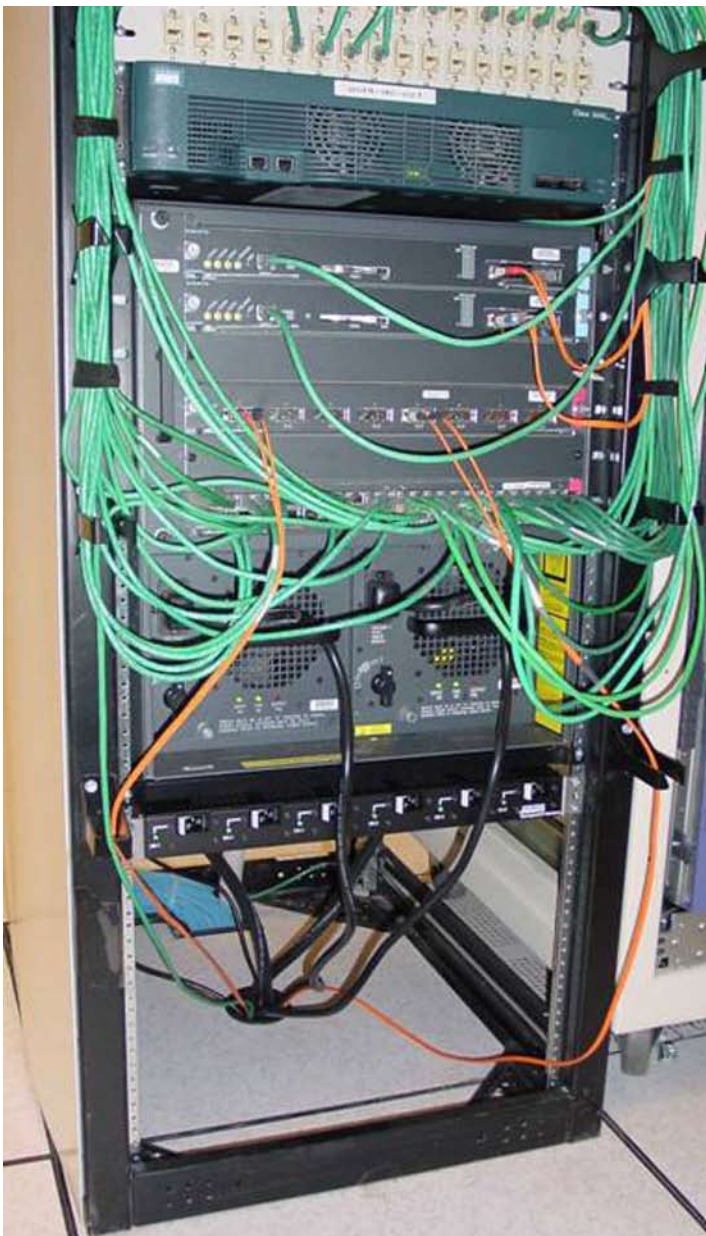


Spectrum Power Management Systems

The Best Choice for Power Distribution to the Cisco Catalyst 6509-E Switch and other 20 Amp Products

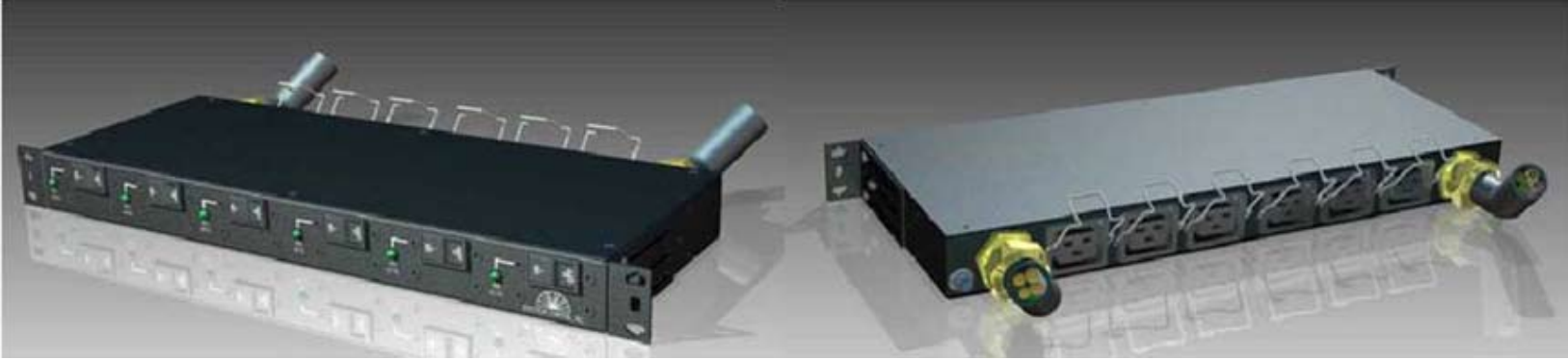


In today's market, there are a variety of power distribution options available. Why choose SPMS for your power distribution needs?

Spectrum Power Management Systems is a leading manufacturer of innovative OEM solutions for AC and DC power distribution and power strip solutions. SPMS designs and develops some of the industry's most reliable products.

Recently, Cisco introduced a new line of network switches that provides high port densities and supports the new 8700 Watt power supply. The 8700 Watt power supply is a triple input supply. Each input requires 16A max at nominal line voltage—100-120VAC (low), 200-240VAC (high). The power supply is designed with independent inputs and hence supports different input power phases for each input. With such advanced capabilities, utilization of the right Power Distribution Unit is key to ensure these features are available for the client.

To ensure clients are able to take advantage of all the Cisco Catalyst 6509-E Switch's (and other 20 Amp devices') capabilities, Spectrum created a rack mounted Power Distribution Unit that enables easy power distribution to such units via dual 3 Phase, 208V circuits. Utilization of dual 3 phase inputs, enables the PDU to distribute nearly 23,000 Watts of total power. This PDU features 6 IEC C19 outlets rated to 20 Amps



maximum per outlet. Each outlet has a cable retention clip to prevent accidental removal of the power cords. There are several benefits to using Spectrum's new PDU versus legacy PDUs.

One major benefit of the Spectrum PDU is its compact, yet powerful, 1RU size. Legacy installations used larger PDUs, which required more space to install, leaving less space in the rack to install other necessary devices.

Spectrum's PDU also allows for quicker installation due to the standard cord set configuration. SPMS uses less expensive and more readily available cables than other vendors. Other PDUs use receptacles that require costly specialty cordage, gender changing cables, and additional labor hours to install.

Another benefit to the dual input 3 phase PDU is convenience of use. This PDU features easy power on indication. A green LED is located next to each outlet's circuit breaker to indicate that

power is available to the load.

After reviewing the benefits, it's clear that Spectrum's dual input 3 phase PDU is the best choice for power distribution to the Cisco Catalyst 6509-E Switch and other 20 Amp devices. This product is used to power the catalyst switch at the Cisco Fleet Centers. Spectrum Power Management Systems, a trusted name by OEMs around the world, is your go-to source for power distribution solutions.



SPMS Dual Input 3 Phase PDU

North American Part Number – 72RA2A8BWFFN-00

Europe & ROW Part Number – 72RA296BXFFN-00